



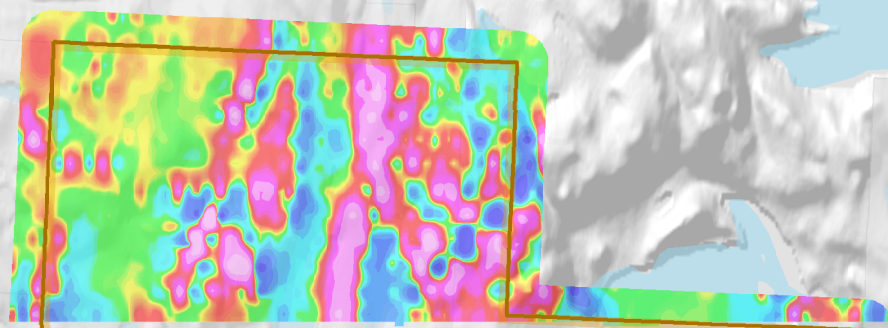
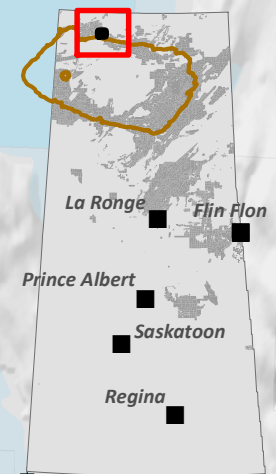
**EAGLE PLAINS  
RESOURCES**

**BEAVER RIVER URANIUM PROJECT**

FIGURE 2. MAGNETICS (CVG)

Projection - NAD 1983 UTM Zone 13N  
Nominal Scale - 1 : 60 000

JUNE 2026



**BEAVER RIVER - 4502 ha**

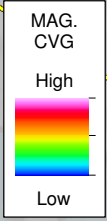
**VIC ZONE**  
- 1.10 wt% U3O8, 14 g/t Au,  
0.97% Cu (grab)

**VIC ZONE**  
- grab samples from VIC U-Cu-Ni occurrence returned up to 27.62% U3O8, 36.30% U3O8 and 29.70% U3O8  
- chip samples from VIC South occurrence returned U3O8 values of 29.89% over 29.3 cm, 18.09% over 15.2 cm and 3.09% over 60.9 cm in length  
- mineralized zone approximately 1097 m in length

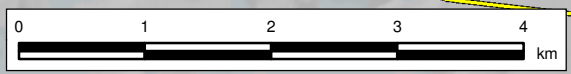
**COMBINED ZONE**  
- 1.77% U3O8 over 0.9m (chip)  
- 0.23% U3O8 over 0.5m (chip)

**VIC ZONE DDH**  
- 0.18% U3O8 over 0.3m

ATHA Energy



- Eagle Plains / Xcite
- Other Mineral Dispositions
- Mineral Occurrence (SMDI)
- Historical DDH
- Transmission Line



330000

335000

340000

6600000

6600000

6595000

6595000