

590000

600000

610000



**Eagle Plains Resources Ltd.**

EPL:TSX-V

### Fisher Project Compilation Highlights

June 2016

**Santoy Gap**

547,800 oz @  
7.40 g/t\*

**Santoy 8**

406,000 oz @  
8.10 g/t\*

**SANTOY  
EXTENSION**

**Santoy Extension**

- Under-explored area with similar host rocks and structural setting as the Santoy deposits

#### VG Occurrence

- 12.6 g/t Au over 7.8m including 256 g/t Au (7.41 oz/t Au) over 0.65m from chip sample
- historic drilling intersects >40 narrow mineralized shears with up to 9.0 g/t Au over 0.70m
- existing high-priority drill targets

**DD Occurrence**

#### Georges Lake Showing

- Chip sample 8.8 g/t Au over 1.0m
- Historic drilling intersected 11 mineralized zones with 1.1 to 22.1 g/t Au over 1.0m
- Drill intercept 1.8 g/t Au over 8.94m
- >1000m mineralized strike- length untested by drilling
- Untested soil anomaly clusters (up to 14320 ppb Au) and high-grade grab samples to 28.0 g/t Au

**GEORGES LAKE**

#### Footprint Trenches

- Narrow high-grade mineralized shears along the Santoy trend
- 500+m mineralized trend within the 6+km Uskik Lake fault system

Seal Lk. Granite Contact

**FOOTPRINT**

**KETTLE FALLS**

#### Fisher Showing

- 2013 discovery: grab sample of 9.2 g/t Au
- Channel sample of 1.39 g/t Au over 8.0m
- Coincident open soil anomaly

▲ Mineral Occurrence

--- Structure

■ Eagle Plains Tenure

■ Silver Standard Tenure

■ Resource Surface Projection

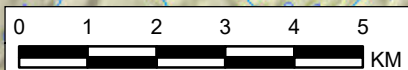
■ Prospective Geology - Simplified

■ Lake

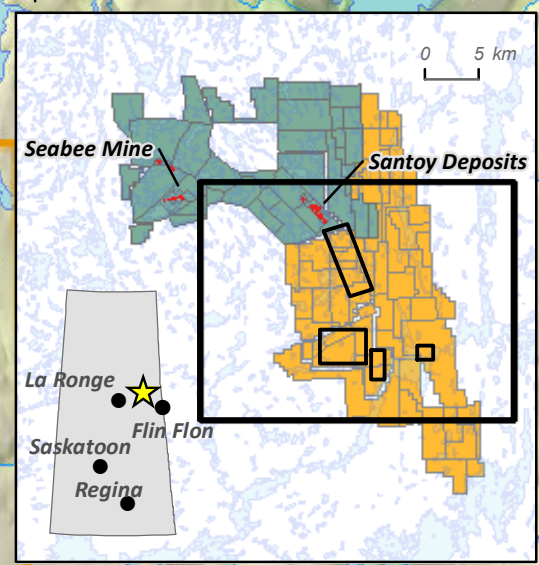
Magnetics - Vertical Gradient

■ High

■ Low



\*Combined reserves and resources obtained from Claude Resources website, April 08, 2016.



0 5 km

6170000

6170000

6160000

6160000

590000

600000

610000