

The Iron Range Project is located 15km NE of the town of Creston in SE British Columbia. Eagle Plains Resources Ltd. (EPL : TSX-V) owns the project 100% with no underlying royalties or encumbrances.

The Iron Range deposits were originally staked in 1897 and covered by Crown Grants held by Cominco Ltd. and the CPR. Eagle Plains staked the claims immediately after the Crown Grants reverted in 2000 and has been working on the property since.

The property is well situated with respect to infrastructure; with a high pressure gas pipeline, high-voltage hydroelectric line, railway and major highway located within property boundaries.



**Eagle Plains
Resources Ltd.**

Contact Information:

Eagle Plains Resources Ltd.
Suite 200, 16 - 11th Ave. South
Cranbrook, BC, Canada V1C 2P1

1 866 Hunt Ore (866 486 8673)
Email: info@eagleplains.com

www.eagleplains.com

IRON RANGE PROJECT

Project Highlights

- Claims cover a prominent regional geological structure / fault system
- EPL is exploring the project for IOCG and SEDEX targets
- 2005 drill results include 2.0m grading 3.82 g/t gold and 46 g/t silver
- 2008 drill results include a bonanza grade intercept of **7.0m grading 51.5 g/t gold (1.5oz)**
- Geologists are excited about the presence of gold associated with this very large regional structure

Exploration History

- Late 1800's – discovery and acquisition by CPR
- 1930-1950 – exploration by Cominco for iron resource
- 2000 – acquisition by Eagle Plains (100%)
- 2000-2007 – systematic exploration by Eagle Plains
- 2008 – discovery-grade gold mineralization (7.0m grading 51.5 g/t gold)

Eagle Plains Future Plans

A 2-phase \$400,000 program in 2009 will follow up the 2008 bonanza grade discovery:

- Phase I will include a detailed soil geochemical survey, mechanized trenching and geological mapping to define the surface expression of the mineralized zone.
- Phase II will consist of a diamond drilling program which will commence later in the season, after results from surface work have been compiled and interpreted.

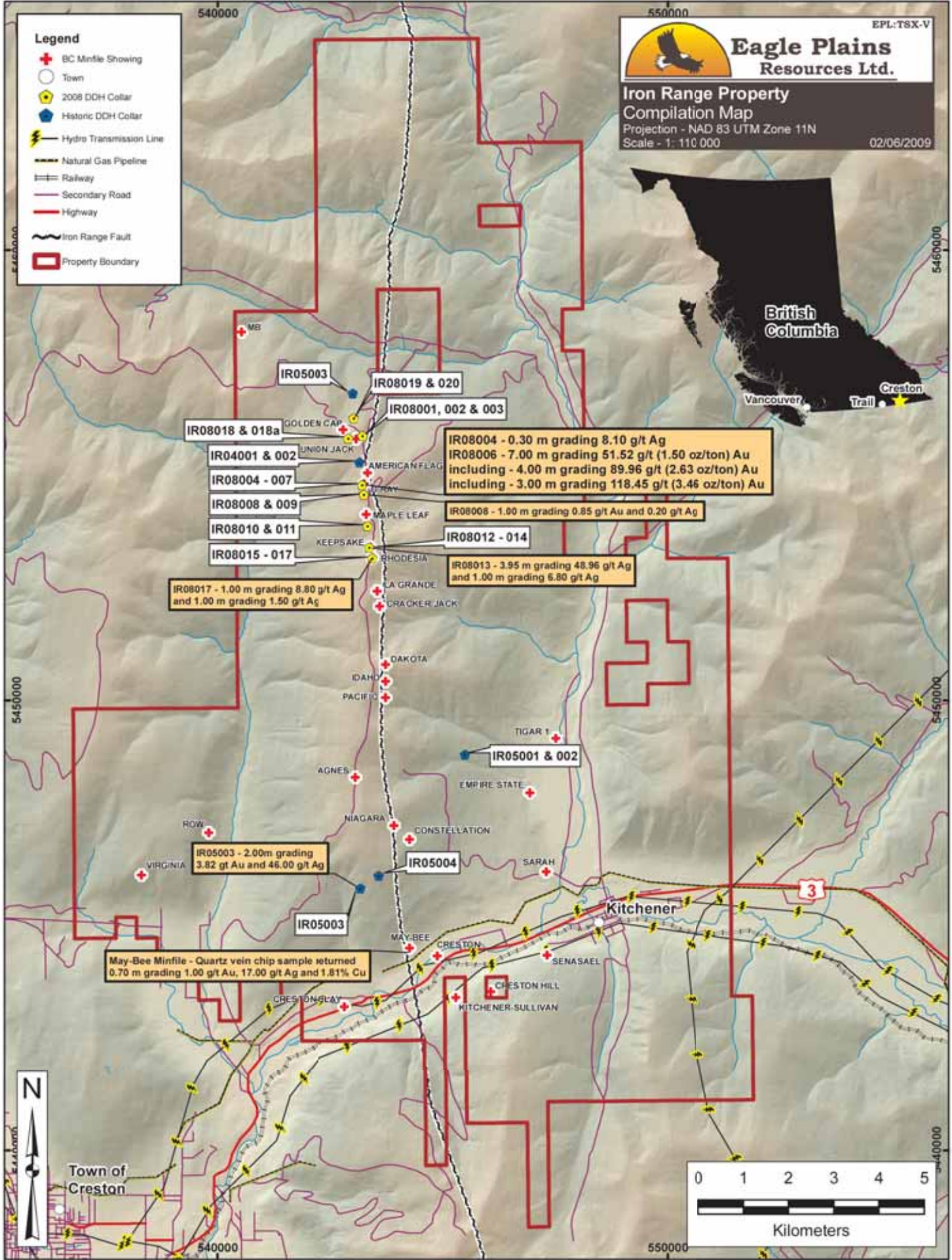
Geology

The claims cover the prominent Iron Range fault system hosted by Aldridge Formation sediments of the Proterozoic Purcell Supergroup. The fault has been traced over a 50km strike length with widths up to 150m. The structure is host to considerable iron oxide mineralization and is overprinted by multiple episodes of hydrothermal alteration. Eagle Plains' tenures cover over 25km of the structure.

For more project information, please visit the Iron Range project at www.eagleplains.com

Legend

- + BC Minfile Showing
- Town
- 2008 DDH Collar
- Historic DDH Collar
- ⚡ Hydro Transmission Line
- Natural Gas Pipeline
- Railway
- Secondary Road
- Highway
- Iron Range Fault
- Property Boundary



IR08004 - 0.30 m grading 8.10 g/t Ag
IR08006 - 7.00 m grading 51.52 g/t (1.50 oz/ton) Au
including - 4.00 m grading 89.96 g/t (2.63 oz/ton) Au
including - 3.00 m grading 118.45 g/t (3.46 oz/ton) Au

IR08017 - 1.00 m grading 8.80 g/t Ag
and 1.00 m grading 1.50 g/t Ag

IR08013 - 3.95 m grading 48.96 g/t Ag
and 1.00 m grading 6.80 g/t Ag

IR05003 - 2.00m grading
3.82 g/t Au and 46.00 g/t Ag

May-Bee Minfile - Quartz vein chip sample returned
0.70 m grading 1.00 g/t Au, 17.00 g/t Ag and 1.81% Cu

